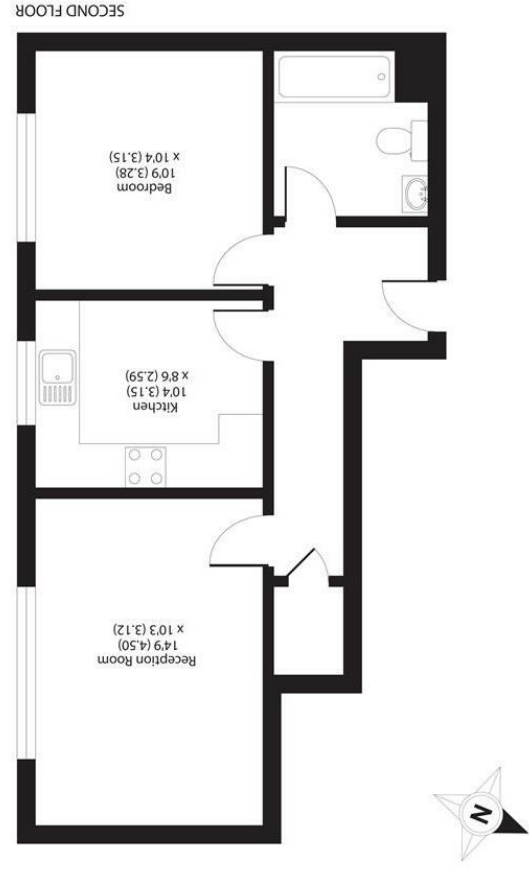
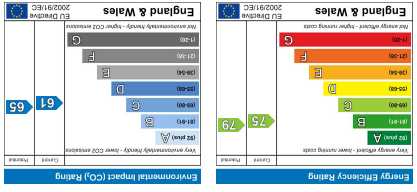


Important Information  
 All appliances listed in these details are only 'as seen' and have not been tested by Gibson Lane, nor have we sought certification of warranty or service, unless otherwise stated.  
 Measurements, areas and distances are approximate. Floor plans and photographs are for guidance purposes only and must not be relied upon for any purpose. These details are offered on the understanding that all negotiations are made through this company. Neither these particulars, nor verbal representations, form part of any offer or contract, and their accuracy cannot be guaranteed.



34 Richmond Road  
 Kingston upon Thames  
 Surrey  
 KT2 5ED  
 www.gibsonlane.co.uk  
 Tel: 020 8546 5444





Flat 8, Parkside Court 34 Wingfield Road  
 Kingston Upon Thames KT2 5LR



## 34 Wingfield Road

Kingston Upon Thames KT2 5LR

**Asking Price £290,000**

A spacious top floor flat presented to a high standard, located on this sought after road adjacent to Richmond Park.

### Description

A bright, light and airy apartment located on the top floor of this well maintained block in North Kingston. This impressive flat offers a large master bedroom, spacious reception room, semi-fitted kitchen and a modern bathroom. The property also benefits from ample storage via a large loft. Further advantages include an allocated parking space, private shed, communal gardens and a share of the freehold. Sold with no chain, viewings are highly recommended!

### Situation

Wingfield Road is a popular residential road ideally situated in the sought after North Kingston area. The property is within close proximity of Richmond Park and conveniently positioned for the River Thames and both Norbiton and Kingston stations giving direct access into Waterloo. Kingston town centre with its array of shops, restaurants and bars is within easy reach and the A3 with routes to London and the M25 is easily accessible by car. The standard of schooling in the immediate area is excellent within both the private and state sector.

**Tenure:** Share of Freehold  
**Local Authority:** Kingston Upon Thames

